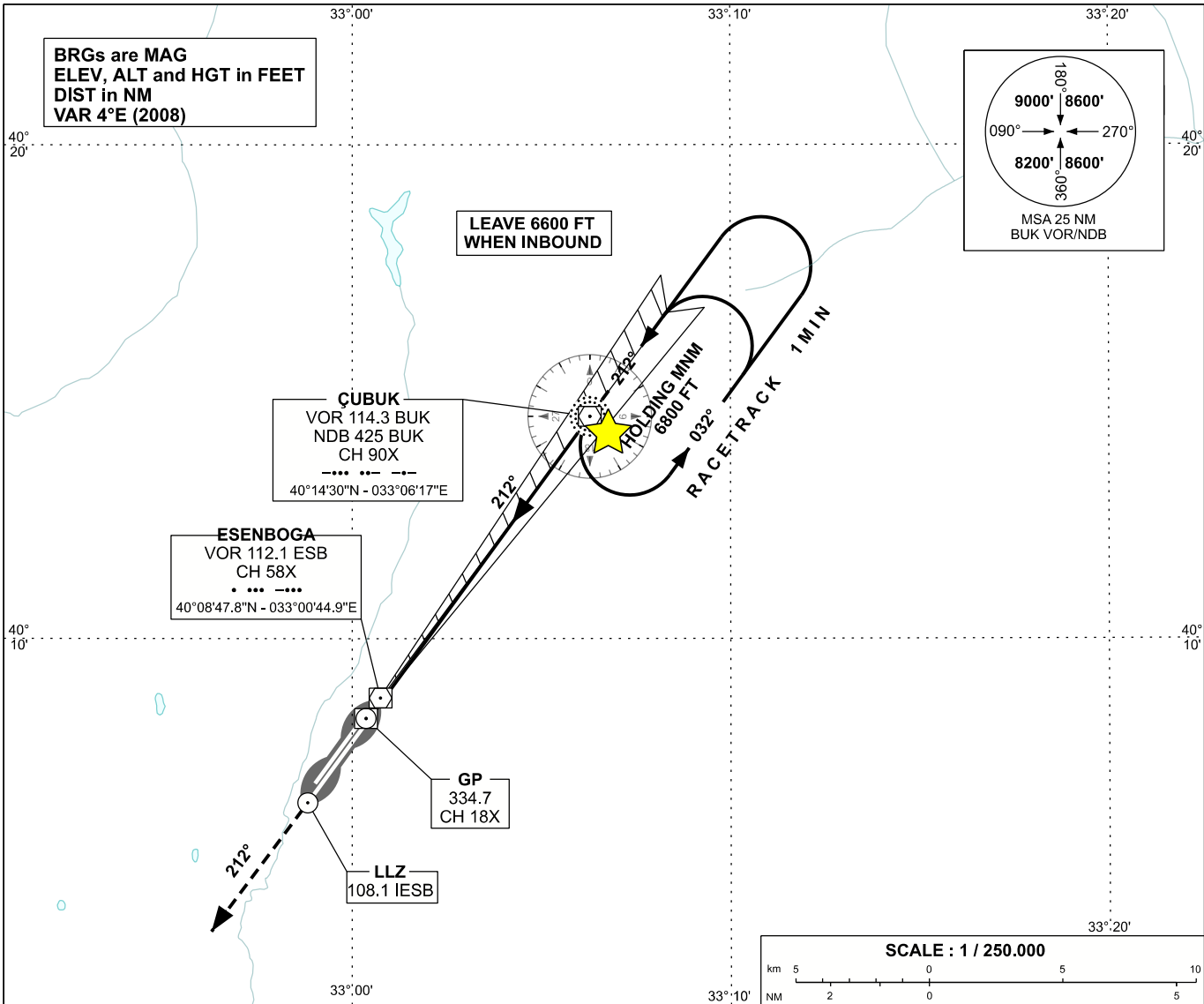


INSTRUMENT
APPROACH
CHART - ICAO

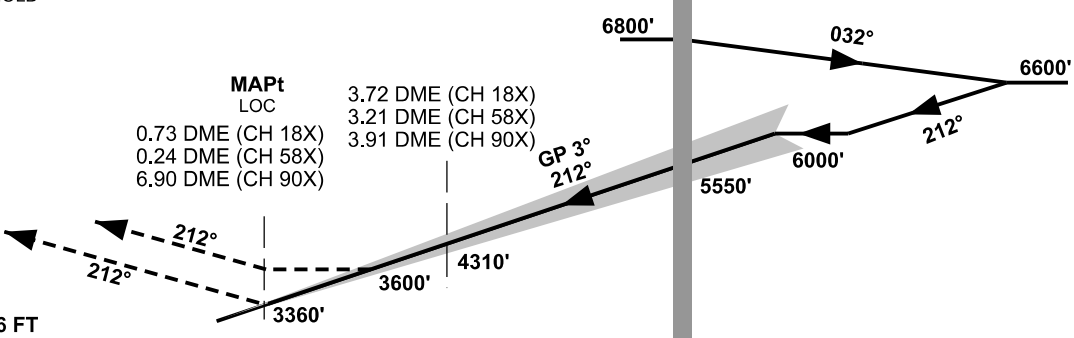
APP	119.6 - 119.1	AD ELEV	3127 FT
TWR	118.1 - 257.8	TRANSITION ALTITUDE	10 000 FT
ATIS	123.6		

ANKARA/ESENBOĞA
ILS Z CAT I or LOC Z
RWY 21L



MISSED APPROACH
CLIMB ON 212° TO CROSS
ANK NDB AT 6500 FT AND HOLD

BUK
VOR/NDB/DME



RWY 21L THR ELEV 3126 FT

NM to/from THR RWY 21L														
OCA (H)		A	B	C	D	- INTERCEPT GP AT 6000 FT AND 1.5 NM BEFORE BUK - ILS RDH 50 FT								
Straight-in Approach	CAT I	3326' (200')												
	LOC	3600' (474')												
Circling		3800' (673')		4650' (1523')										

CHANGE: OCA(H), PROCEDURE NAME